



KEELEY Alternative Value Fund

Class A KALVX
Class I KALIX

Investment Objective

Keeley Asset Management will focus the equity investments in companies with small- and mid-size market capitalizations, which are currently defined as \$7.5 billion or less. The majority of the long-only portfolio will be invested in stocks undergoing internal corporate restructuring.

Broadmark Asset Management will provide tactical risk management by assessing overall stock market risk by monitoring a variety of quantitative and fundamental factors. When Broadmark perceives the portfolio's risk to be high and opportunity low, it will reduce the fund's net exposure to equities.

Risks

Smaller and medium-sized company stocks are more volatile and less liquid than larger more established company securities.

Investment Philosophy

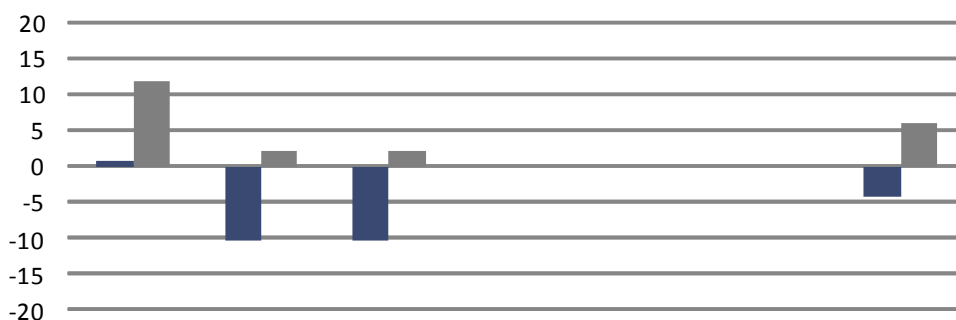
The Fund managers focus on identifying undervalued small-mid sized companies with stable or improving earnings records and sound finances. The sub-adviser seeks to protect the Fund from market risk by assessing such factors as monetary policy, valuation analysis, investor sentiment and momentum.

Quarterly Update 12/31/2011

Fund Profile

Total Net Asset	\$18,004,303
Number of Holdings	102
Asset Allocation (%)	
Equity	98.0
Purchased Options	2.0
Expense Ratio	
Gross Expense Ratio (Class A Shares)	2.34%
Waiver/Expense Reimbursement*	-0.45%
Gross Expense Ratio (Class I Shares)	2.09%
Waiver/Expense Reimbursement*	-0.45%
Net Expense Ratio*:	
Class A Shares (KALVX)	1.89%
Class I Shares (KALIX)	1.64%

Average Annual Total Returns - as of December 31, 2011



	3 months	YTD	1 Year	3 Year	5 Year	10 Year	S.I.**
KEELEY Alternative Value Fund Class A (KALVX) - without load	0.83	-10.24	-10.24	n/a	n/a	n/a	-4.37
KEELEY Alternative Value Fund Class A (KALVX) - with load	-3.73	-14.28	-14.28	n/a	n/a	n/a	-6.84
KEELEY Alternative Value Fund Class I (KALIX)	0.94	-10.02	-10.02	n/a	n/a	n/a	-4.07
S&P 500⁽²⁾	11.82	2.11	2.11	n/a	n/a	n/a	5.96
Russell 2500 Value⁽³⁾	15.45	-3.36	-3.36	n/a	n/a	n/a	5.04

* The Fund's Adviser, Keeley Asset Management Corp., has contractually agreed to waive a portion of its fee or reimburse the Fund to the extent that total operating expenses during the current fiscal year exceed 1.89%. The waiver for the Alternative Value Fund is in effect through January 31, 2012

** Cumulative Annualization: Inception (S.I.) date is 4.1.10

"Without load" does not reflect the deduction of the maximum 4.50% sales fee (load), which reduces the performance quoted.

Past performance does not guarantee future results. The performance data quoted represents past performance and current returns may be lower or higher. The investment return and principal will fluctuate so that an investor's shares, when redeemed, may be worth more or less than the original cost. For an additional prospectus or to view the most current performance data visit us at www.KeeleyFunds.com. Please read the prospectus carefully before investing.

Portfolio Managers:

Keeley Asset Management

Lead PM: John L. Keeley, Jr.

Asst. PM: Brian R. Keeley

Broadmark Asset Management

Christopher J. Guptill

Inception Date: 04/01/2010

Quarterly Update 12/31/2011

GICS Sectors	KALVX	Portfolio Characteristics	KALVX
Consumer Discretionary	20.70%	Average Market Cap	\$3.3 B
Consumer Staples	3.39%	Median Market Cap	\$1.9 B
Energy	13.20%	Price/Earnings*	13.88x
Financials	13.99%	Price/Book*	1.63x
Health Care	7.63%	Price/Cash Flow*	6.12x
Industrials	32.70%	Price/Sales*	0.87x
Information Technology	2.42%	Alpha**	-12.30
Materials	9.61%	Beta***	0.66
Telecommunication Svc	0.00%	Standard Deviation****	11.76%
Utilities	2.13%		

* Last 12 Months

** Alpha is a measure of performance on a risk-adjusted basis. Alpha takes the volatility (price risk) and compares its risk-adjusted performance to a benchmark index. A positive alpha of 1.0 means the fund has outperformed its benchmark index by 1%.

*** Beta is the current measure of a portfolio's risk in relation to the market or a benchmark. For example, a benchmark or index will have a beta of 1, so any portfolio with a higher beta is more volatile than the benchmark. Any with a lower beta may be less volatile than the market.

**** Standard deviation is a statistical measurement of historical volatility and can be used to gauge the amount of expected volatility. A large dispersion indicates how much a fund is deviating from the expected normal returns.

KEELEY Alternative Value Fund rankings and performance are based on past performance at net asset value.

(1) Portfolio holdings will change, and should not be considered purchase recommendations. Top holdings do not reflect cash, money markets or options/futures contracts holdings.

(2) The S&P 500 Index is designed to act as a barometer for the overall U.S. stock market. The index is unmanaged, consisting of 500 stocks that are chosen on the basis of market size, liquidity, and industry grouping. The S&P 500 is a market value weighted index with each stock's weight in the index proportionate to its market value.

(3) The Russell 2500 Value Index is an unmanaged index that measures the performance of those Russell 2500 companies with lower price-to-book ratios and lower forecasted growth rates.

© 2005 Morningstar, Inc. All Rights Reserved. The information contained herein: (1) is proprietary to Morningstar and/or its content providers; (2) may not be copied or distributed; and (3) is not warranted to be accurate, complete or timely. Neither Morningstar nor its content providers are responsible for any damages or losses arising from any use of this information. Past performance is no guarantee of future results. Securities indexes assume reinvestment of all distributions and interest payments and do not take in account brokerage fees or taxes.

Securities in the Fund may not match those in the indexes and performance of the Fund will differ. Direct investment in an index is not possible. KEELEY Alternative Value Fund is distributed by Keeley Investment Corp.

Data presented herein was obtained from FactSet, Whilshire Associates, and/or U.S. Bank N.A.

KEELEY funds

Shareholder Services

888-933-5391

info@KeeleyFunds.com

Distributed by:

Keeley Investment Corp.

Member FINRA/SIPC

312-786-5050

800-533-5344

312-786-5003 fax